

NOW LEASING

RIVERWALK - RIVER DISTRICT ROCK HILL, SOUTH CAROLINA

LIVE.WORK.PLAY.BELONG. LIVE.WORK.PLAY.BELONG. LIVE.WORK.PLAY.BELONG. LIVE.WORK.PLAY.BELONG. LIVE

Welcome to Riverwalk! *a mixed use outdoor community...*



Regional Convenience

Ranked Top 50 Places to Live in 2024, Rock Hill Sits Only 15 Miles to Ballantyne, 17 Miles to Charlotte Douglas International Airport, and 21 Miles to Uptown Charlotte.

Thriving Community

1000-Acre Mixed-Use Development Serving General Office, Medical Office, Restaurants and Shops for Employees, Families & Residents across the Carolinas

Business Hub

Home to a variety of Medical Facilities, and Local Businesses.

Regional Access

The Development Borders Cherry Road and Edens Terrace, The Catawba River, and Sits Less than .25 Miles from I-77's Exit 82

Endless Housing Options

A Residential Community of over 1600 Homes, Townhomes, Harbor Chase Assisted Living, and Luxury Apartment Homes

Outdoor Recreational Activities

In Addition to 3.5 Miles of Paved Greenway, Amphitheater Overlooking the Catawba River, Soccer Fields, Playground; Riverwalk is Home to South Carolina's only Olympic Caliber Velodrome, BMX Track, and Criterium Course.

DEMOGRAPHICS



POPULATION

1 Mile: 3,854
3 Miles: 41,054
5 Miles: 112,433



AVG. HH INCOME

1 Mile: \$66,033
3 Miles: \$85,691
5 Miles: \$91,434



DAYTIME POP.

1 Mile: 2,307
3 Miles: 20,129
5 Miles: 52,636

For Leasing Information Contact:

803-574-3322

propertymanagement@grhdevelopment.com

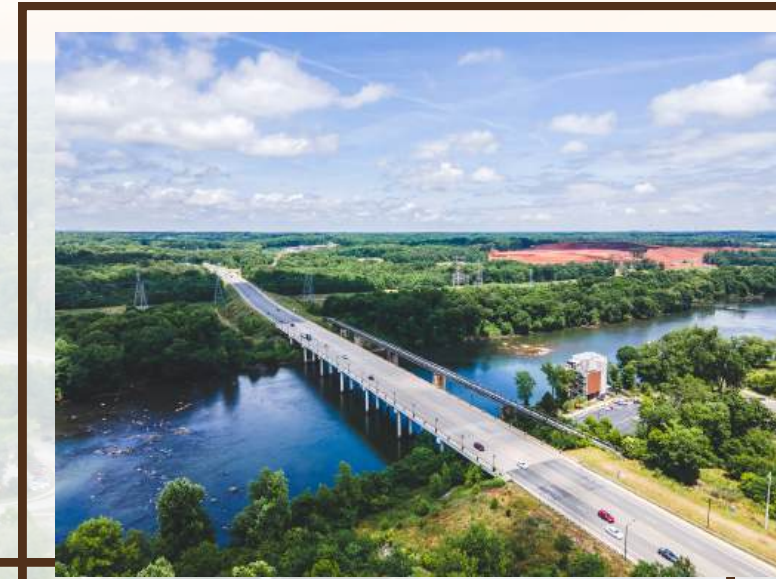
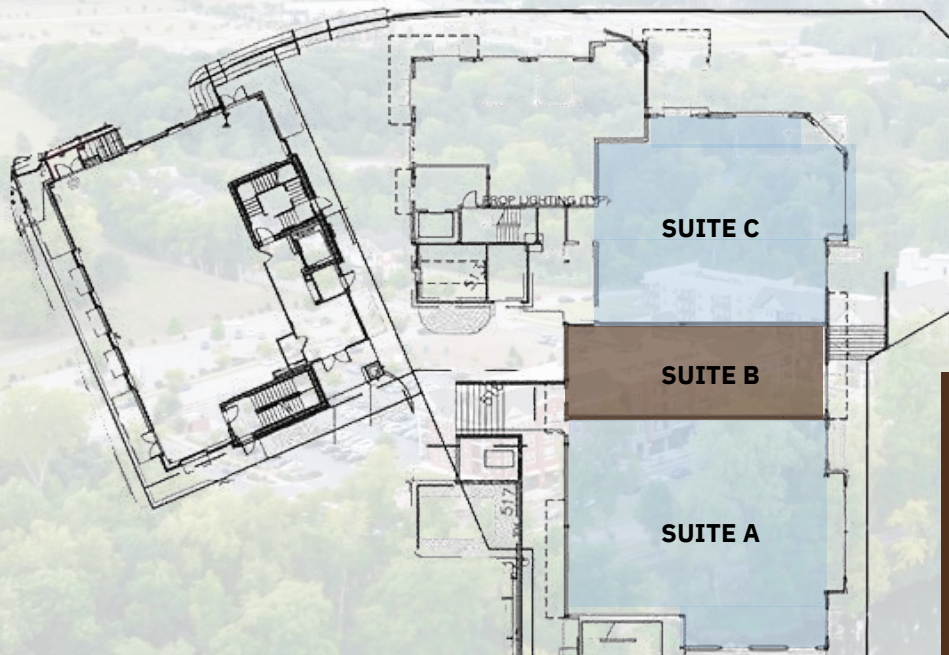
RETAIL FOR LEASE

RIVERWALK - RIVER DISTRICT
Grace Building - 819 Terrace Park Rock Hill, SC 29730

LIVE.WORK.PLAY.BELONG. LIVE.WORK.PLAY.BELONG. LIVE.WORK.PLAY.BELONG. LIVE.WORK.PLAY.BELONG. LIVE.WORK.PLAY.BELONG.

GRACE BUILDING FEATURES

TOTAL SQUARE FEET: +/-8,391
CLASS: A
YEAR BUILT: 2018



RETAIL SPACE

SUITE	A	GLOW BEAUTY LOUNGE
SUITE	B	AVAILABLE - 1235 SF
SUITE	C	BIKETOWN

"The information contained herein was obtained from sources believed reliable, however, no guarantees, warranties, or representations have been made as to the completeness or accuracy thereof. No liability assumed for error or omissions."

For Leasing Information Contact:

803-574-3322

propertymanagement@grhdevelopment.com

RETAIL SPACE AVAILABLE

RIVERWALK - TOWN CENTER

Rock Hill, South Carolina 29730

RESTAURANTS AND LOCAL ATTRACTIONS



RESTAURANTS + LOCAL ATTRACTIONS NEARBY

RIVER DISTRICT AMMENTITIES

- Ritchie's Italian Bistro
- Blend
- Tony's Cantina
- Glow Beauty Lounge
- 8th Limb Yoga
- Charlotte Running Company

FOOD + DRINKS

- Bojangles
- Sonny's BBQ
- Freddy's Steakburgers
- IHOP
- Olive Garden
- Outback Steakhouse
- Panera Bread
- Ruby Tuesday's
- Showmars
- Steak & Shake
- Texas Roadhouse
- Wendy's
- Zaxby's

LODGING + ATTRACTIONS

- Anne Springs Close Greenway
- Blues & Jazz Festival
- Carowinds
- Cherry Park
- Courtyard Marriott
- Culture & Heritage Museums
- Fountain Park
- Glencairn Garden
- Hampton Inn
- Hilton Garden Inn
- Hyatt Place
- Wingate by Wyndham
- Winthrop University
- BMX World Championships

SHOPPING + NIGHTLIFE

- Academy Sports & Outdoors
- Aeropostale
- American Eagle Outfitters
- Belk
- Best Buy
- Carmike Cinemas 7
- Dick's Sporting Goods
- Galleria Mall
- Home Depot
- Kohl's
- Lowe's
- Petsmart
- Plato's Closet
- Regal Manchester
- Rock Box
- Rock Hill Tavern
- Rue21
- Sam's Club
- Target

"The information contained herein was obtained from sources believed reliable, however, no guarantees, warranties, or representations have been made as to the completeness or accuracy thereof. No liability assumed for error or omissions."



For Leasing Information Contact:

803-574-3322 | propertymanagement@grhdevelopment.com